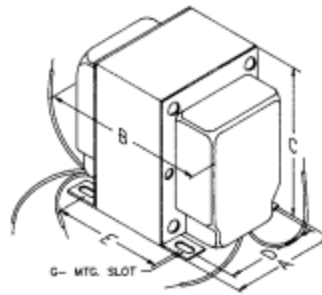


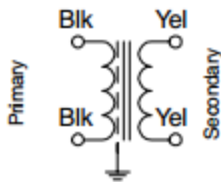
## Straight Isolation - Hard Wired (169 Series)

### LINE ISOLATION TRANSFORMERS (115V to 115V)

- Primary 115VAC, 60 Hz., Secondary 115VAC
- Electrostatic shield between primary & secondary
- Connection by flexible leads, 8" minimum length
- Perfect for circuit isolation or "Classic" bias power supply
- CSA certified (# LR3902)
- **Remember** - These units do NOT convert line frequency



### Transformer Schematic



Part No.	Capacity		Dimensions (Inches)					Wt. Lbs.
	VA	Sec. Current ma	A	B	C	D	E	
<b>169PS</b>	15	130	1.88	2.07	2.50	1.50	1.19	1.3
<b>169QS</b>	40	260	2.19	2.50	2.63	1.75	1.44	2.5
<b>169RS</b>	60	435	2.50	2.75	3.06	2.00	1.69	3.3
<b>169SS</b>	90	650	2.50	3.25	3.06	2.00	2.19	4.5
<b>169TS</b>	135	870	3.13	3.50	3.81	2.50	2.19	6.5
<b>169VS</b>	175	1300	3.13	4.00	3.81	2.50	2.69	7
<b>169WS</b>	250	1700	3.75	4.00	4.56	3.00	2.81	12