

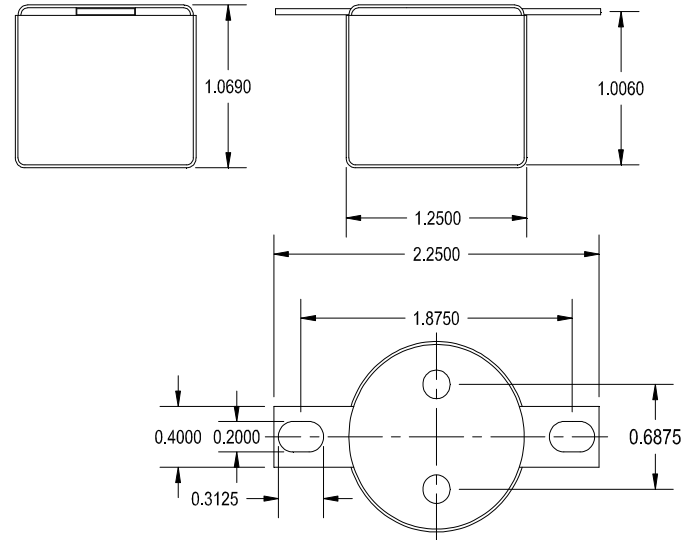
1140-MN-A

CHASSIS MOUNT – SHIELDED
1:10 MICROPHONE STEP UP TRANSFORMER

This transformer offers a high step up ratio and operates in the 20 Hz to 20 KHz range.

The mu metal can provides excellent shielding from a broad range of external sources. The nickel core provides high permeability combined with low losses for a very wide band width

Typical applications for input stage on vacuum tube or FET style amplifiers.

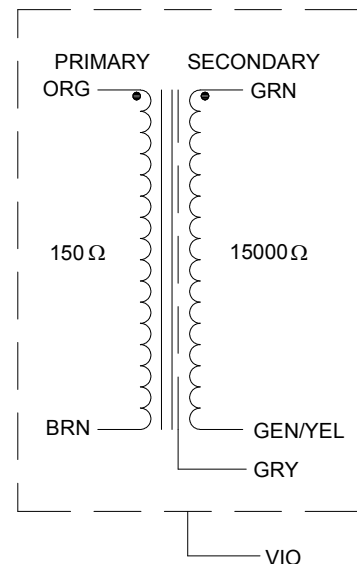


ELECTRICAL SPECIFICATIONS

| Characteristic | Conditions | Typical |
|-----------------------------|--------------------------------------|----------|
| Input Impedance | | 150 Ω |
| Output Impedance | | 15000 Ω |
| Primary Input Impedance | @ 1kHz -20dbu Test Circuit 3 | 1.3KΩ |
| Secondary Output Impedance | @ 1kHz -20dbu Test Circuit 4 | 12.5Ω |
| Maximum input Level | @ 20Hz RL = 15000Ω | -2.5dbu |
| DCR | | |
| Primary | @20°C | 24.0 Ω |
| Secondary | @20°C | 2400 Ω |
| Frequency Response | @ 20 Hz, -20 dbu, Test Circuit 3 | -0.06db |
| | @ 20 kHz, -20 dbu, Test Circuit 3 | 0.0db |
| Turns ratio | | 1:10 |
| Common Mode Rejection Level | @ 60 Hz Test Circuit 2 | 90db |
| | 3kHz Test Circuit 2 | 75db |
| THD | @ 1kHz -20 dbu Test Circuit 1 | 0.004% |
| | @ 20Hz -20 dbu Test Circuit 1 | 0.005% |
| Phase Shift | @ 20 Hz Test Circuit 1 | 1.75° |
| | @ 20 kHz Test Circuit 1 | 5.0° |
| Capacitance | Primary to Shield and Case | 350pf |
| | Secondary to Shield and Case | 375pf |
| Dielectric Strength | | 500 Vrms |

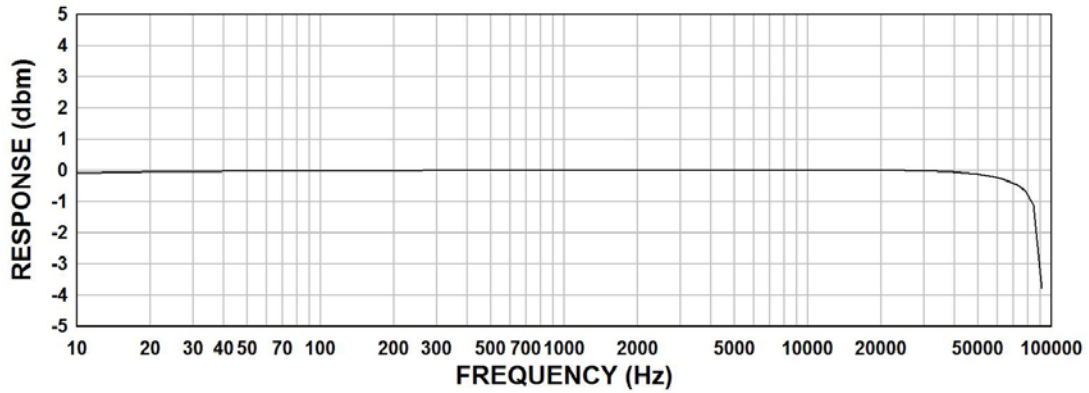


SCHEMATIC DIAGRAM



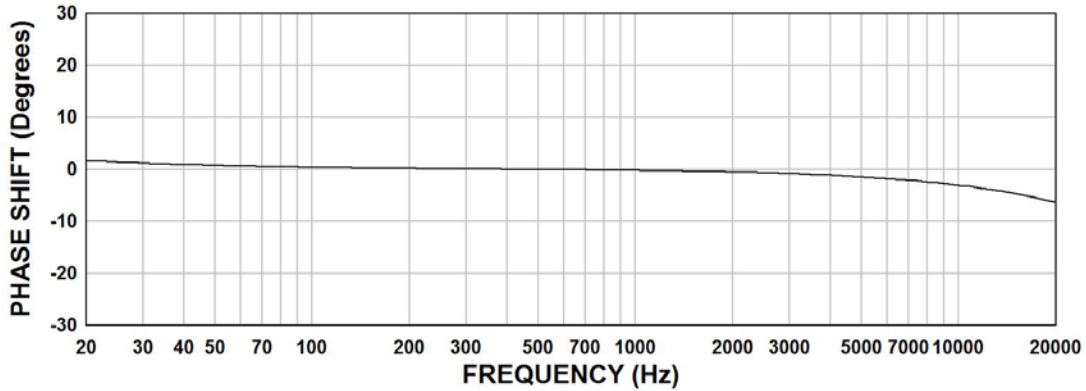
1140-MN-A FREQUENCY RESPONSE

Input Level -20dbu
Rs=150Ω, RL=15000Ω



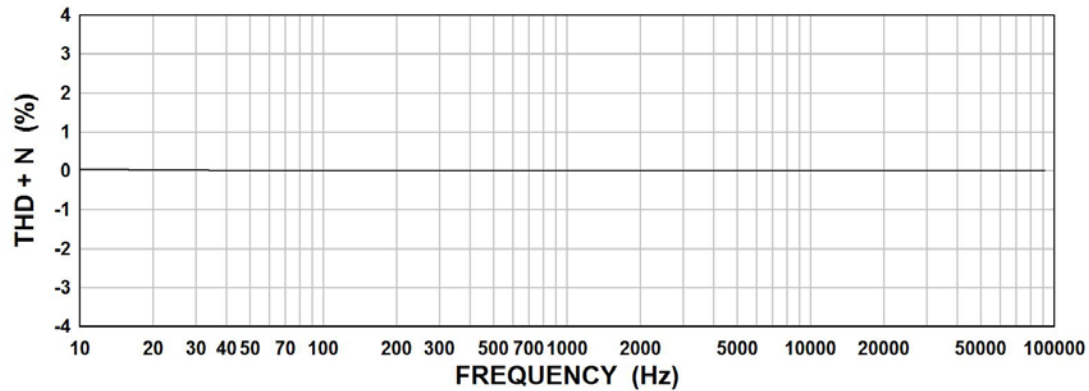
1140-MN-A PHASE SHIFT

Input Level -20dbu
Rs= 150Ω, RL= 15000Ω

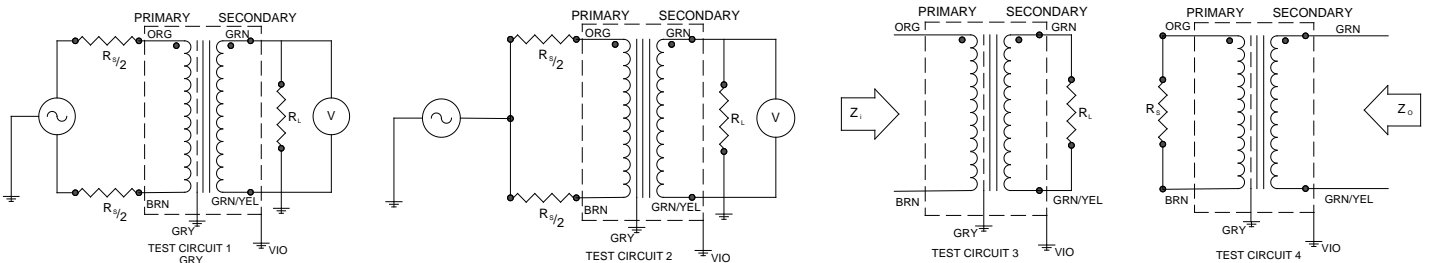


1140-MN-A THD + N

Input Level -20dbu
Rs= 150Ω, RL= 15000Ω



TYPICAL TEST CIRCUIT



Measurement instruments: Hp4192a Impedance Analyzer; Hp3456a DVM; Keithley 2002 DVM; D scope series iii audio analyzer

This drawing and the information in it is the property of Hammond Manufacturing. It may not be reproduced, transmitted or used in any manner whatsoever without the written permission of Hammond Manufacturing. Data subject to change without notice.